

Linie:

Chur - Arosa

Strecke:

Haspelgrube - Arosa

Arosertunnel, Instandsetzung

km 25.216

Submission

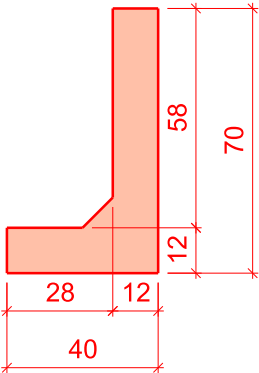
Hauptarbeiten

Kabelplan

<div><div><div><div></div><div></div></div><div><div>FPREISIGAG</div><div>BAUINGENIEURE UND PLANER SIA USIC SÄGENSTRASSE 4, CH-7000 CHUR, T 081 250 09 30 WWW.PREISIGAG.CH</div></div></div><div><div><div><div></div><div></div></div><div><div>AMBERG</div><div>ENGINEERING</div></div></div><div><div>Ringstrasse 18, Postfach 19 7000 Chur Tel:081 288 66 99 Fax:081 286 66 01</div></div></div></div>	Datum		Gezeichnet	Geprüft	Dateiname	2093_450_50.bla
	16.12.2019		mov	bai	Bezug zu	
	A				Format	30 x 63
	B				Massstab	1 : 20
	C				Taks Nr.	+KBL 16025
	D				Plan Nr.	2093_450_50
	E				Plan Nr. RhB:	Blatt-Nr.:
Infrastruktur Kunstbauten 7001 Chur		F			3463-110	

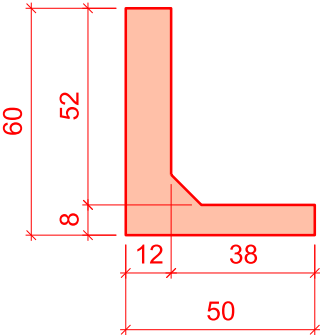
Perronwinkel, 1:20

L = 2.00m



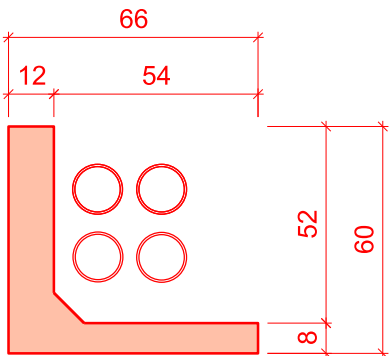
Aufsatzwinkel, 1:20

L = 2.00m

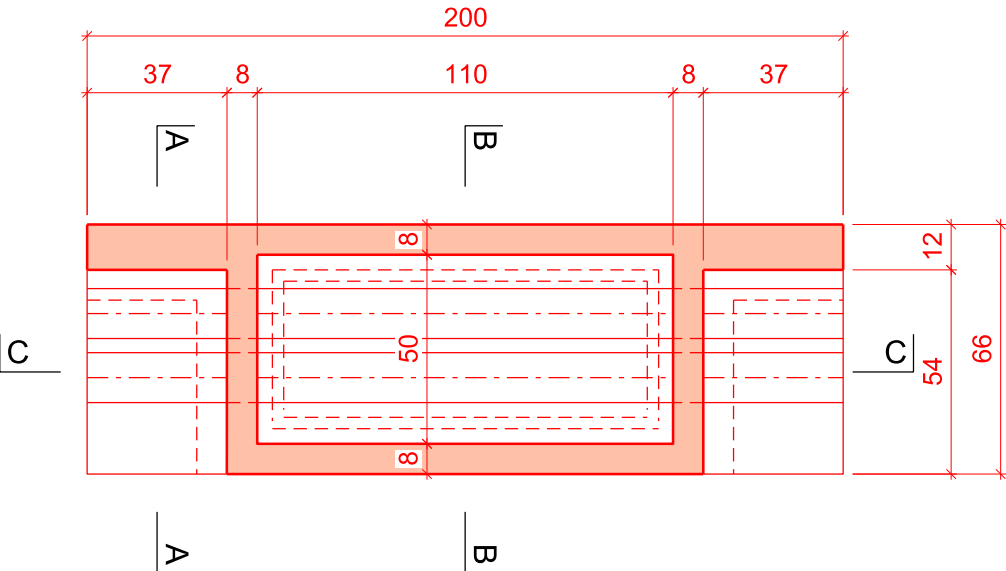


Kabelschacht

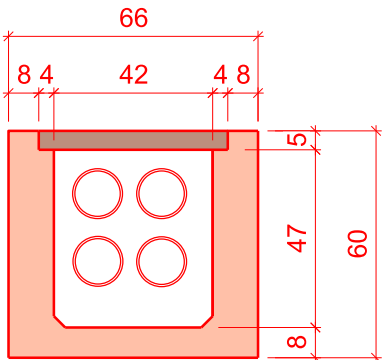
Schnitt A - A, 1:20



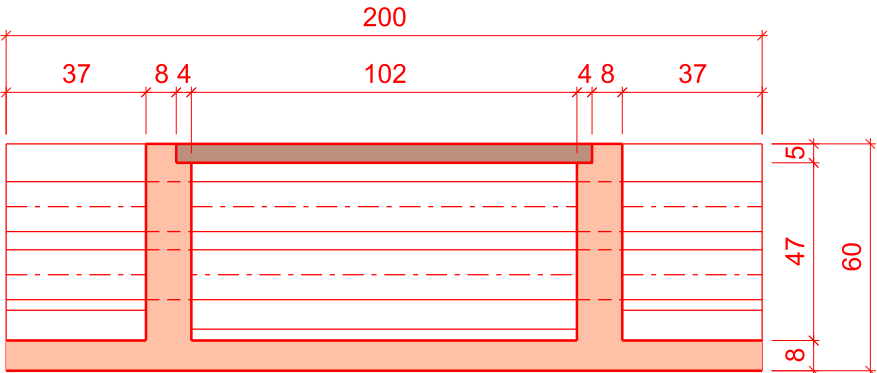
Grundriss, 1:20



Schnitt B - B, 1:20

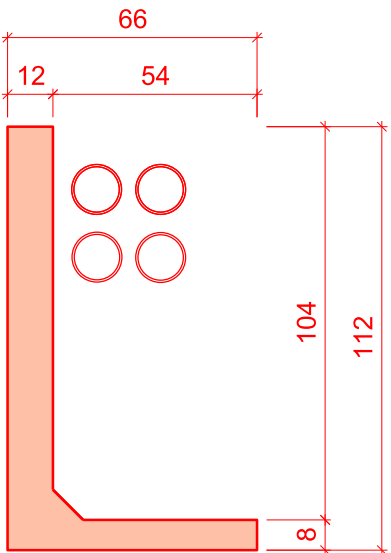


Schnitt C - C, 1:20

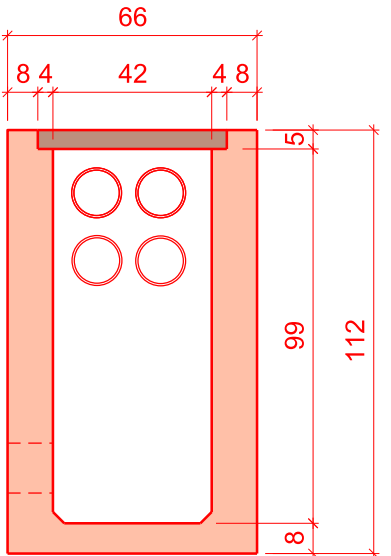


Kabelschacht für Querung

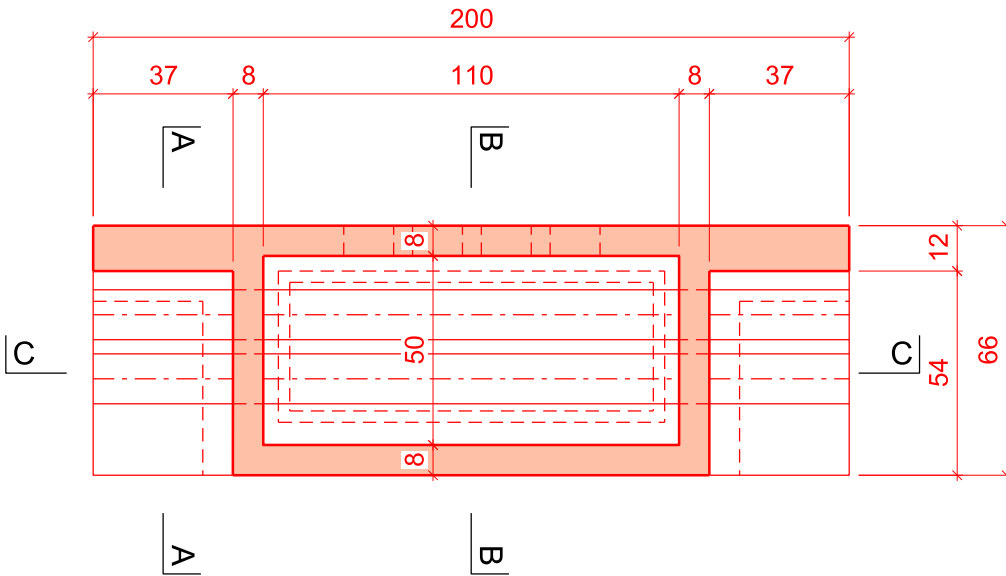
Schnitt A - A, 1:20



Schnitt B - B, 1:20



Grundriss, 1:20



Schnitt C - C, 1:20

